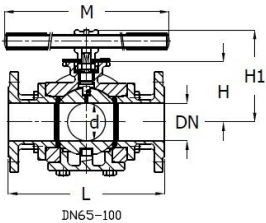
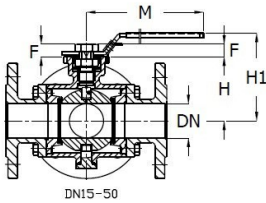
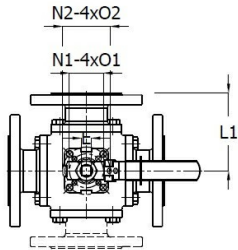


Fig. 7281 Three-way ball valve



ECON®



Econ® three-way ball valve, full bore, L- or T-bore, supported ball and flange connection to DIN PN16 or PN40, ISO 5211 direct mount top flange. Actuated by means of a lever or T-bar. This type of ball valve has standard four supporting seats and is generally used in industrial systems such as water, gases, and corrosive media, up to a maximum of 40 bar (PN 40 version).

Features

- Connection: Flange
- Sealing: PTFE
- Standard flange attachment: ISO 5211 Direct Mount
- Secondary spindle seal material: PTFE
- TA Luft: Yes
- Standard: DIN
- Material quality: 1.0619
- Material ball seal: TFM 1600
- Angular deflection [°]: 90
- Full bore: Yes
- Primary spindle seal material: PTFE
- Spindle o-ring material: FPM (FKM)
- Surface treatment: Epoxy coating (external)
- Body material: Steel
- Material ball: 1.4308
- Spindle material: 1.4301

Pressure and Temp Range

Size	Pressure rating	Temperature range	-10	+50	+100	+150	+200	[°C]
DN65-DN100	PN16	-10°/+200°C	16	15	13	13	11	[bar]
DN15-DN50	PN40	-10°/+200°C	39	37	34	32	19	[bar]

Dimensions

DN	d	L	L1	M	H	F	H1	N1	N2	nxO1	nxO2	E	Weight
[mm]													[kg]
15	15	150	75	145	53	9	83	36	42	4x6	4x6	9	4,5
20	20	160	80	145	58,5	9	88,5	36	50	4x6	4x7	9	5,9
25	25	180	90	175	70	11	104	42	50	4x6	4x7	11	8,7
32	32	190	95	175	77,5	11	111,5	42	70	4x6	4x9	11	11
40	38	212	106	200	86,5	14	120,5	50	70	4x7	4x9	14	14,4
50	49	230	115	200	92	14	126	50	70	4x7	4x9	14	19,2
65	63	290	145	265	107	17	155	70	102	4x9	4x11	17	31,7
80	75	310	155	265	119	17	167	70	102	4x9	4x11	17	43,5
100	99	355	177,5	400	150	22	214	--	102	--	4x11	22	64,4

Order Information

Stock	Article No.	Order code	DN	Pressure rating	Operation/Actuation	Ball bore
	EC07281N0015SP4L	504468	DN 15	PN 40	Lever	L-bore
	EC07281N0015SP4T	504477	DN 15	PN 40	Lever	T-bore
S	EC07281N0020SP4L	504469	DN 20	PN 40	Lever	L-bore
	EC07281N0020SP4T	504478	DN 20	PN 40	Lever	T-bore
S	EC07281N0025SP4L	504470	DN 25	PN 40	Lever	L-bore
S	EC07281N0025SP4T	504479	DN 25	PN 40	Lever	T-bore
S	EC07281N0032SP4L	504471	DN 32	PN 40	Lever	L-bore
S	EC07281N0032SP4T	504480	DN 32	PN 40	Lever	T-bore

This product information sheet has been formulated with the greatest care, but no rights can be derived from it. Subject to change.

Fig. 7281

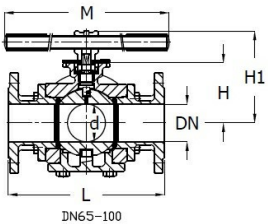
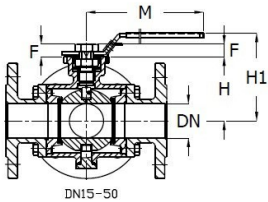
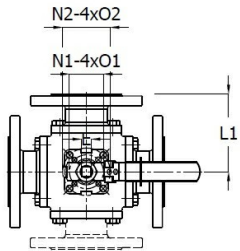
Three-way ball valve

Stock	Article No.	Order code	DN	Pressure rating	Operation/Actuation	Ball bore
S	EC07281N0040SP4L	504472	DN 40	PN 40	Lever	L-bore
S	EC07281N0040SP4T	504481	DN 40	PN 40	Lever	T-bore
S	EC07281N0050SP4L	504473	DN 50	PN 40	Lever	L-bore
S	EC07281N0050SP4T	504482	DN 50	PN 40	Lever	T-bore
S	EC07281N0065SP6L	504474	DN 65	PN 16	T-handle	L-bore
S	EC07281N0065SP6T	504483	DN 65	PN 16	T-handle	T-bore
S	EC07281N0080SP6L	504475	DN 80	PN 16	T-handle	L-bore
S	EC07281N0080SP6T	504484	DN 80	PN 16	T-handle	T-bore
	EC07281N0100SP6L	504476	DN 100	PN 16	T-handle	L-bore
S	EC07281N0100SP6T	504485	DN 100	PN 16	T-handle	T-bore

Fig. 7291 Three-way ball valve



econ®



Econ® three-way ball valve, full bore, L- or T-bore, supported ball and flange connection to DIN PN16 or PN40, ISO 5211 direct mount top flange. Actuated by means of a lever or T-bar. This type of ball valve has standard four supporting seats and is generally used in industrial systems such as water, gases, and corrosive media, up to a maximum of 40 bar (PN 40 version).

Features

- Connection: Flange
- Sealing: PTFE
- Standard flange attachment: ISO 5211 Direct Mount
- Secondary spindle seal material: PTFE
- TA Luft: Yes
- Body material: Stainless steel
- Material ball: 1.4408
- Spindle material: 1.4401
- Angular deflection [°]: 90
- Full bore: Yes
- Primary spindle seal material: PTFE
- Spindle o-ring material: FPM (FKM)
- Standard: DIN
- Material quality: 1.4408
- Material ball seal: TFM 1600

Pressure and Temp Range

Size	Pressure rating	Temperature range	-29	+50	+100	+150	+200	[°C]
DN65-DN100	PN16	-30°/+200°C	16	15	13	13	11	[bar]
DN15-DN50	PN40	-30°/+200°C	39	37	33	30	19	[bar]

Dimensions

DN	d	L	L1	M	H	F	H1	N1	N2	nxO1	nxO2	E	Weight
[mm]													[kg]
15	15	150	75	145	53	9	83	36	42	4x6	4x6	9	4,5
20	20	160	80	145	58,5	9	88,5	36	50	4x6	4x7	9	5,9
25	25	180	90	175	70	11	104	42	50	4x6	4x7	11	8,7
32	32	190	95	175	77,5	11	111,5	42	70	4x6	4x9	11	11
40	38	212	106	200	86,5	14	120,5	50	70	4x7	4x9	14	14,4
50	49	230	115	200	92	14	126	50	70	4x7	4x9	14	19,2
65	63	290	145	265	107	17	155	70	102	4x9	4x11	17	31,7
80	75	310	155	265	119	17	167	70	102	4x9	4x11	17	43,5
100	99	355	177,5	400	150	22	214	--	102	--	4x11	22	64,4

Order Information

Stock	Article No.	Order code	DN	Pressure rating	Operation/Actuation	Ball bore
S	EC07291N0015RP4L	504424	DN 15	PN 40	Lever	L-bore
	EC07291N0015RP4T	504433	DN 15	PN 40	Lever	T-bore
	EC07291N0020RP4L	504425	DN 20	PN 40	Lever	L-bore
	EC07291N0020RP4T	504434	DN 20	PN 40	Lever	T-bore
S	EC07291N0025RP4L	504426	DN 25	PN 40	Lever	L-bore
S	EC07291N0025RP4T	504435	DN 25	PN 40	Lever	T-bore
S	EC07291N0032RP4L	504427	DN 32	PN 40	Lever	L-bore
	EC07291N0032RP4T	504436	DN 32	PN 40	Lever	T-bore

This product information sheet has been formulated with the greatest care, but no rights can be derived from it. Subject to change.

Fig. 7291

Three-way ball valve

Stock	Article No.	Order code	DN	Pressure rating	Operation/Actuation	Ball bore
S	EC07291N0040RP4L	504428	DN 40	PN 40	Lever	L-bore
S	EC07291N0040RP4T	504437	DN 40	PN 40	Lever	T-bore
S	EC07291N0050RP4L	504429	DN 50	PN 40	Lever	L-bore
S	EC07291N0050RP4T	504438	DN 50	PN 40	Lever	T-bore
S	EC07291N0065RP6L	504430	DN 65	PN 16	T-handle	L-bore
S	EC07291N0065RP6T	504439	DN 65	PN 16	T-handle	T-bore
S	EC07291N0080RP6L	504431	DN 80	PN 16	T-handle	L-bore
S	EC07291N0080RP6T	504440	DN 80	PN 16	T-handle	T-bore
S	EC07291N0100RP6L	504432	DN 100	PN 16	T-handle	L-bore
S	EC07291N0100RP6T	504441	DN 100	PN 16	T-handle	T-bore