

# KONTRAVENTIL MED FJEDER

## TYPE 6300



armatec

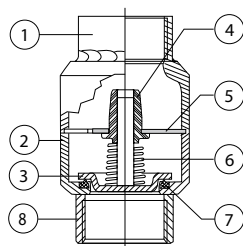


### GENERELT

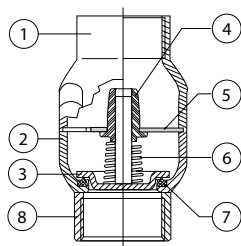
DIMENSION:	1/4" TIL 1 1/4"
TRYKTRIN:	PN 16
ÅBNINGSTRYK:	0,025 - 0,035 BAR
MATERIALE:	RUSTFRIT STÅL AISI 316
GEVINDENDER:	BSPP - MUFFE
TEMPERATUR:	EPDM (-20°C TIL 110°C) FPM (-20°C TIL 150°C)

### OPTION

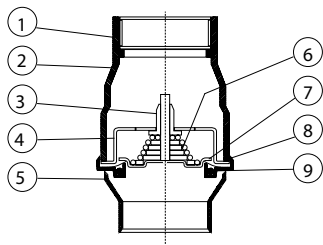
DIMENSION:	1 1/2" TIL 3"
GEVINDENDER:	NPT
TEMPERATUR:	NBR (-20°C TIL 90°C) PTFE (-20°C TIL 200°C)



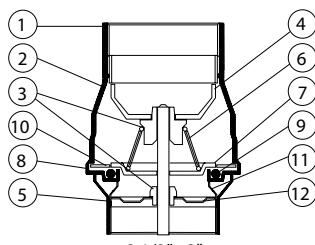
1/4" - 3/8"



1/2"



3/4" - 2"



2 1/2" - 3"

POS	BESKRIVELSE	MATERIALE
1	AFGANGSENDE	RUSTFRIT STÅL - AISI 316
2	HUS	RUSTFRIT STÅL - AISI 316
3	KEGLE	RUSTFRIT STÅL - AISI 316
4	STYREBØSNING	PTFE
5	KEGLESTYR	RUSTFRIT STÅL - AISI 316
6	FJEDER	RUSTFRIT STÅL - AISI 316
7	PAKNING	EPDM ELLER FPM
8	TILGANGSENDE	RUSTFRIT STÅL - AISI 316

1/4" - 1/2"

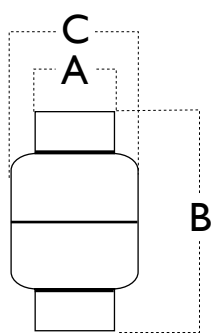
POS	BESKRIVELSE	MATERIALE
1	AFGANGSENDE	RUSTFRIT STÅL - AISI 316
2	HUS	RUSTFRIT STÅL - AISI 316
3	STYREBØSNING	PTFE
4	KEGLESTYR	RUSTFRIT STÅL - AISI 316
5	TILGANGSENDE	RUSTFRIT STÅL - AISI 316
6	FJEDER	RUSTFRIT STÅL - AISI 316
7	KEGLE	RUSTFRIT STÅL - AISI 316
8	HUS FOR PAKNING	RUSTFRIT STÅL - AISI 316
9	PAKNING	EPDM ELLER FPM
10	HOLDER FOR PAKNING	RUSTFRIT STÅL - AISI 316
11	STØTTERING FOR PAKNING	RUSTFRIT STÅL - AISI 316
12	KEGLESTYR	RUSTFRIT STÅL - AISI 316

3/4" - 3"

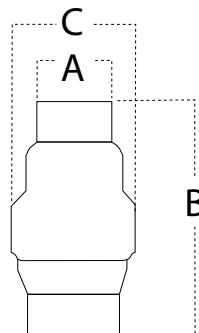
### BESKRIVELSE

- **Rustfri udførelse giver lang levetid.**
- **Korrosionsbestandigt materialevalg** giver mange anvendelsesmuligheder selv i aggressive miljøer.
- **Blødtættende funktion** optimerer tæthedsgraden.
- **Fjederpåvirket kegle** muliggør montering i alle retninger.
- **Pladsbesparende udførelse.**
- **Glat, rengøringsvenlig overflade.**

## DIMENSION



1/4" - 1/2"

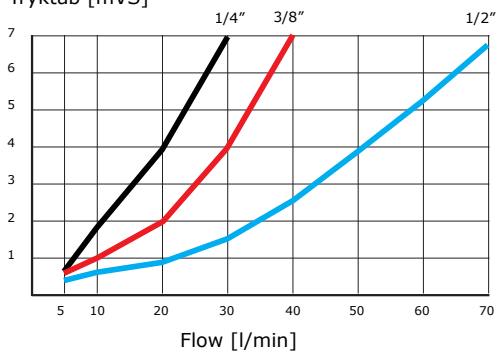


3/4" - 3"

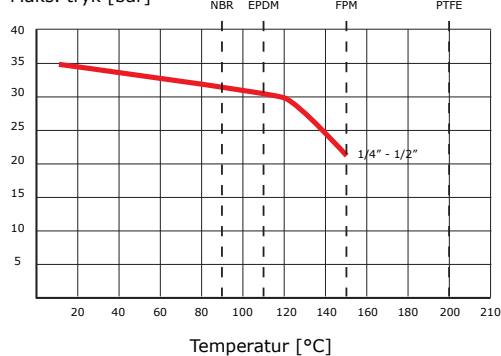
DIM.	DN	A [MM]	B [MM]	C [MM]	VÆGT [KG]
1/4"	DN 08	20,0	56,0	32	0,105
3/8"	DN 10	20,0	56,0	32	0,900
1/2"	DN 15	25,0	56,0	32	0,900
3/4"	DN 20	30,0	67,0	44	0,129
1"	DN 25	35,8	83,0	53	0,191
1 1/4"	DN 32	45,0	97,0	66	0,281
1 1/2"	DN 40	50,8	115,0	78	0,388
2"	DN 50	63,0	120,5	90	0,704
2 1/2"	DN 65	80,0	142,0	113	1,425
3"	DN 80	93,0	160,0	132	2,085

## VENTIL DATA

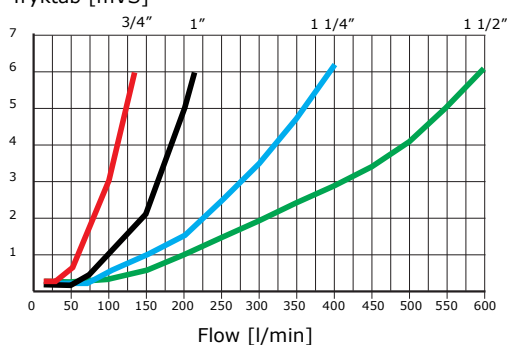
Tryktab [mVS]



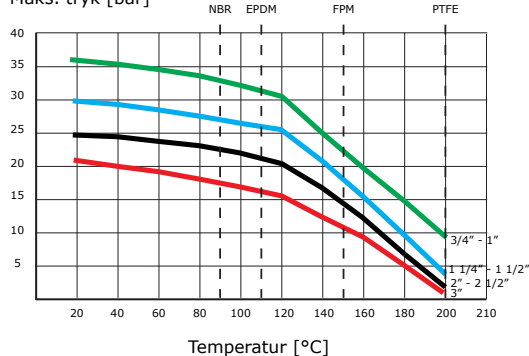
Maks. tryk [bar]



Tryktab [mVS]



Maks. tryk [bar]



Tryktab [mVS]

